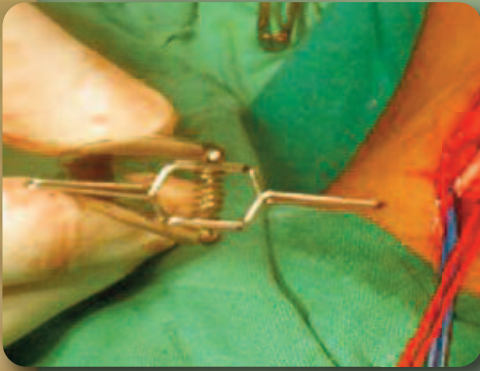


ASSI El-Shazly Double Transverse Microvascular Clamps

For Vessels



Clamp manipulation

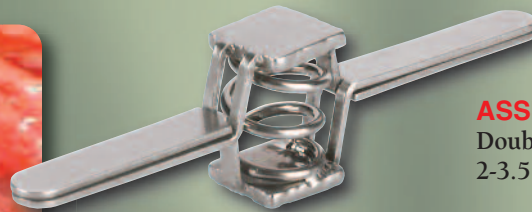


ASSI.DTMC1

Double Transverse Microvascular Clamp
1-2 mm Vessel Diameter



Application of 2 clamps to 4 vessels
(2 arteries and 2 veins)



ASSI.DTMC2

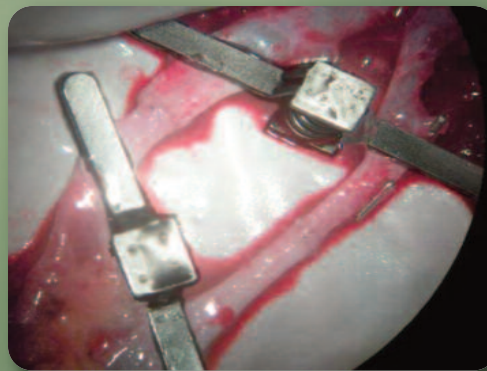
Double Transverse Microvascular Clamp
2-3.5 mm Vessel Diameter

Features:

- The ASSI Double Transverse Microvascular Clamp is to be applied simultaneously to an artery and its accompanying vein
- It can be used to separate the Artery from the Vein in order to easily perform each anastomosis
- Ideal for use in small narrow fields, requires less space than 2 double approximator clamps



Clamps and vessels ready for
Anastomosis



Completed Anastomosis (magnified)



Completed Anastomosis

Designed by:
M. El-Shazly, MBBCh, MSc, MD
Associate Professor of Plastic,
Burn and Microsurgery
Assuit University - Egypt



ACCURATE SURGICAL & SCIENTIFIC INSTRUMENTS®

For diamond perfect performance®

accurate surgical & scientific instruments corporation

300 Shames Drive, Westbury, NY 11590

800.645.3569 516.333.2570 fax: 516.997.4948 west coast: 800.255.9378

Info: assi@accuratesurgical.com Orders: orders@accuratesurgical.com www.accuratesurgical.com