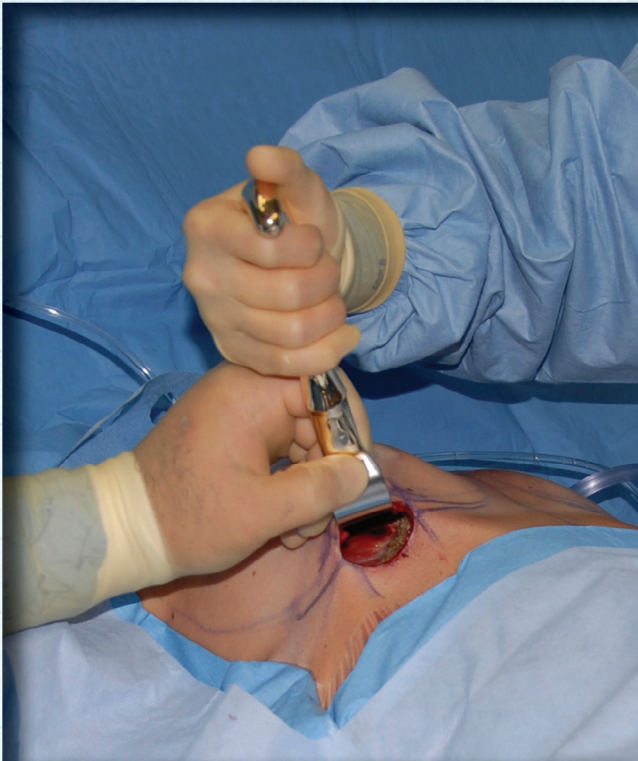


ASSI® Epstein Breast Retractors



Epstein Breast Retractors: developed to create a retractor that provides unparalleled exposure and simultaneously reduces the strain on the surgeon's shoulder while permitting an atraumatic dissection, resulting in less pain and bleeding.

By reversing the handle we have achieved a "power assist" by the assistant. The minimum blade length outside the wound reduces the leverage on the surgeon's shoulder.

The teeth surrounding the working end of the retractor ensures a gentle, yet firm hold on the tissue. The spatulated-end enables the surgeon to obtain maximal exposure at the point of surgical dissection.

ASSI.ABR29426
Epstein Breast Retractor
90x27mm blade, w/36mm spatulated working end with teeth

ASSI.ABR29626
Epstein Breast Retractor
110x27mm blade, w/36mm spatulated working end with teeth

ASSI.ABR29726
Epstein Breast Retractor
140x27mm blade, w/36mm spatulated working end with teeth

ASSI.ABR29826
Epstein Breast Retractor
160x27mm blade, w/36mm spatulated working end with teeth

ASSI.ABR29926
Epstein Breast Retractor Set,
consisting of one each:
ASSI.ABR29426, ASSI.ABR29626,
ASSI.ABR29726, ASSI.ABR29826

Also available with fiber optic, suction and fiber optic/suction, please inquire



Designed By: Mark D. Epstein, M.D., F.A.C.S., Stonybrook, NY

assi®
ACCURATE SURGICAL & SCIENTIFIC INSTRUMENTS®

For diamond perfect performance®

accurate surgical & scientific instruments corporation

300 Shames Drive, Westbury, NY 11590

800.645.3569 516.333.2570 fax: 516.997.4948 west coast: 800.255.9378

Info: assi@accuratesurgical.com • Orders: orders@accuratesurgical.com • www.accuratesurgical.com

Note: Not all ASSI products shown in our literature or on our website are available for sale in Canada.